

EQUITY and INCLUSION:

Successfully Navigating the Promotion and Tenure Process

An Annual Pre-tenure Symposium Sponsored by the President's Commissions for Equity and the University Libraries

Friday, October 16, 2015

Foster Auditorium, Paterno Library, University Park Campus

Agenda:

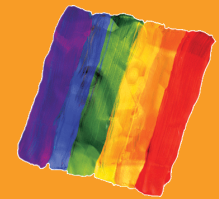
- 9:00–9:30 a.m.** **Registration and Continental Breakfast**—(Mann Assembly Room)
Breakfast may not be brought into Foster Auditorium
- 9:30–9:45 a.m.** **Welcome**—(Foster Auditorium)
Barbara Dewey, Dean, University Libraries
Kathy Bieschke, Chair, P&T Symposium Planning Committee
- 9:45–10:30 a.m.** **A Conversation with the Provost**—(Foster Auditorium)
Nicholas Jones, Executive Vice President and Provost
- 10:30–11:15 a.m.** **Funding and Publishing your Research**—(Foster Auditorium)
Zuleima Karpyn, Associate Professor and Quentin E. and Louise L. Wood Endowed Faculty Fellow in Petroleum and Natural Gas Engineering, College of Earth and Mineral Sciences (Moderator)
Nancy Luke, Associate Professor of Sociology and Demography, College of the Liberal Arts
Krista M. Wilkinson, Professor of Communication Sciences and Disorders, College of Health and Human Development
- 11:15 a.m.–Noon** **Presentation: Garnering Respect in the Classroom**—(Foster Auditorium)
Rayne Sperling, Associate Professor, Educational Psychology, College of Education
Wanda Knight, Associate Professor, Art Education and Women's Studies, College of Arts and Architecture (Moderator)
- Noon–12:10 p.m.** **Introductions of Commission Leadership, Senior Faculty Mentor, Vice Provost for Academic Affairs, Vice Provost for Educational Equity**
(Foster Auditorium)
- 12:10–1:00 p.m.** **Lunch and Informal Networking**—(Mann Assembly Room)
Lunch may not be brought into Foster Auditorium
- 1:00–1:30 p.m.** **Presentation: Strategies for Moving Forward**—(Foster Auditorium)
Blannie Bowen, Vice Provost for Academic Affairs
- 1:30–2:15 p.m.** **Panel: An Insider's View of the Promotion and Tenure Process**
—(Foster Auditorium)
Kathy Bieschke, Professor of Counseling Psychology and Head, Educational Psychology, Counseling, and Special Education, College of Education (Moderator)
Victor Romero, Professor of Law, The Dickinson School of Law
Stephanie Shields, Professor, Psychology and Women's Studies, College of the Liberal Arts
Rama Radhakrishna, Professor of Agricultural and Extension Education, College of Agricultural Sciences
- 2:15–2:55 p.m.** **Treasures Hidden in Plain Sight**
Sandy Confer, Assistant to the Dean, University Libraries
Keith Gilyard, Senior Faculty Mentor, Edwin Erle Sparks Professor of English and African American Studies, College of the Liberal Arts
Erica Frankenberg, Associate Professor of Education (Educational Leadership), College of Education
- 2:55–3:00 p.m.** **Wrap-up and Evaluation**

This symposium is jointly sponsored by the President's Commissions for Equity:



CORED
COMMISSION ON
RACIAL/ETHNIC DIVERSITY

equity.psu.edu/cored



CLGBTE
COMMISSION ON LESBIAN, GAY,
BISexual, AND TRANSGENDER EQUITY

equity.psu.edu/clgbte



CFW
COMMISSION FOR WOMEN

equity.psu.edu/cfw

Hosted by:

UNIVERSITY | LIBRARIES



PennState